



MARLA MORGAN, Architect
Ph: 208.270.2244
E-MAIL: morganmrm@cobleone.net

OWNER: **William Clayson**
Wolverine Rocks & Rubber
New Office and Warehouse Building
6030 S. Yellowstone Hwy Idaho Falls, Idaho 83402

SHEET CONTENTS

MECHANICAL FLOOR PLANS

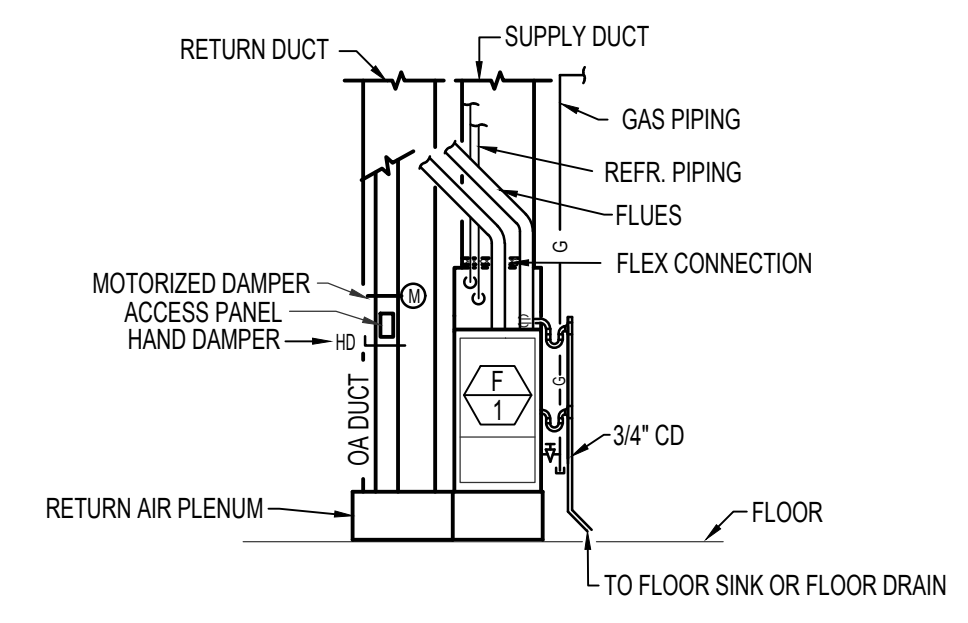
REVISIONS	DATE	DESCRIPTION

SHEET NUMBER
M-1 OF 3

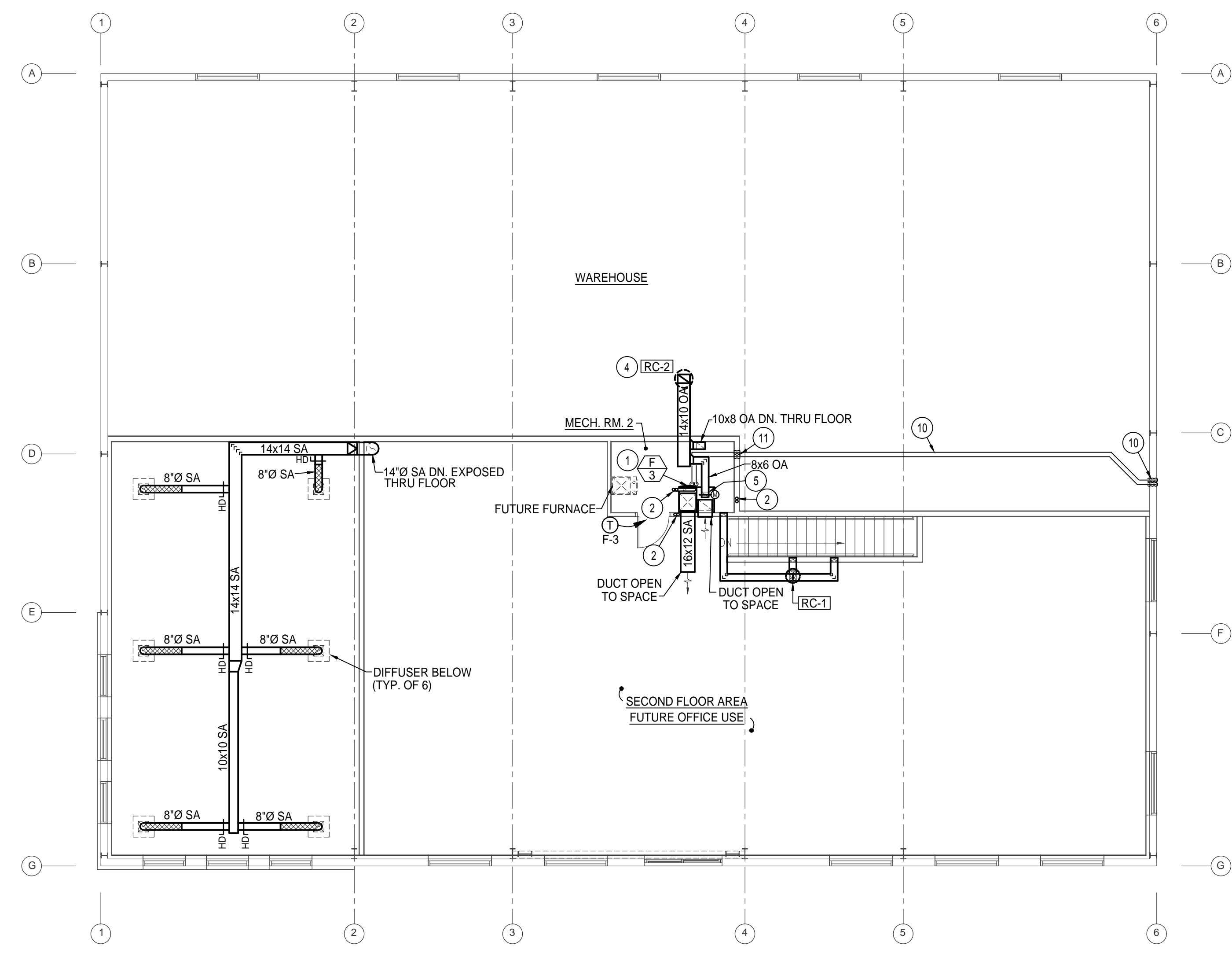
PLAN NOTES:

- INSTALL FURNACE ON 12" HIGH RETURN AIR PLENUM. SEE DETAIL ON SHEET M-3.
- RISE (2) 3" Ø FURNACE FLUES UP THRU ROOF TO VERTICAL VENT TERMINATION ASSEMBLY. SEE DETAIL ON SHEET M-3.
- INSTALL TRANSFER GRILLE ON WALL AT 6" A.F.F. IN OFFICE 1 AND RISE 12x3 RETURN DUCT UP IN WALL AND CONNECT TO TRANSFER GRILLE HIGH ON WALL LOCATED IN OFFICE 2. TRANSFER GRILLE IN OFFICE 2 TO BE LOCATED 6" BELOW CEILING.
- INSTALL OUTSIDE AIR ROOF CAP ON METAL ROOF AND SEAL ROOF PENETRATION WEATHERTIGHT. MAINTAIN 10'-0" CLEARANCE FROM ROOF CAP TO ANY PLUMBING VENT OR EXHAUST ON ROOF.
- DROP 8x6 OUTSIDE AIR DUCT DOWN AND CONNECT TO FURNACE PLENUM. INSTALL HAND DAMPER, ACCESS PANEL AND MOTORIZED DAMPER IN VERTICAL PORTION OF 8x6 OA DUCT. BALANCE HAND DAMPER TO 150 CFM AND INTERLOCK MOTORIZED DAMPER WITH FURNACE OPERATION.
- DROP 8x8 OUTSIDE AIR DUCT DOWN AND CONNECT TO FURNACE PLENUM. INSTALL HAND DAMPER, ACCESS PANEL AND MOTORIZED DAMPER IN VERTICAL PORTION OF 8x8 OA DUCT. BALANCE HAND DAMPER TO 200 CFM AND INTERLOCK MOTORIZED DAMPER WITH FURNACE OPERATION.
- INSTALL UNIT HEATER AT 10'-0" A.F.F. IN LOCATION SHOWN. CAREFULLY COORDINATE WITH OWNER TO AVOID CONFLICT WITH ANY OWNER PROVIDED EQUIPMENT.
- INSTALL CONDENSING UNIT ON 4" THICK CONCRETE PAD. CONCRETE PAD BY GENERAL CONTRACTOR.
- COVER EXPOSED REFR. PIPING WITH 18 GA. GALVANIZED SHEET METAL COVER AS PER DETAIL ON SHEET M-3.
- RISE (3) SETS OF REFR. PIPING UP IN EXTERIOR WALL TO BOTTOM OF ROOF STRUCTURE AND RUN ACROSS TO UPPER LEVEL MECH. ROOM AS SHOWN.
- DROP (2) SETS OF REF. PIPING DOWN IN WALL TO SERVE FURNACES IN MECH. ROOM ON 1ST FLOOR.
- INSTALL EXPOSED SPIRAL DUCTWORK AS HIGH AS POSSIBLE IN ROOM IN LOCATION SHOWN. ALL EXPOSED SPIRAL DUCTWORK TO BE PAINTLOK.
- INSTALL EXPOSED RECTANGULAR DUCTWORK ON WALL IN LOCATION SHOWN. TOP ELEVATION OF DUCTWORK TO BE AT APPROX. 10'-10" A.F.F. FIELD VERIFY EXACT DIMENSION TO ALLOW DUCTWORK TO BE RUN BETWEEN LEVELS IN DROPPED DOWN CEILING SPACE OVER HALLWAY. ALL PORTIONS OF EXPOSED DUCTWORK TO BE PAINTLOK.

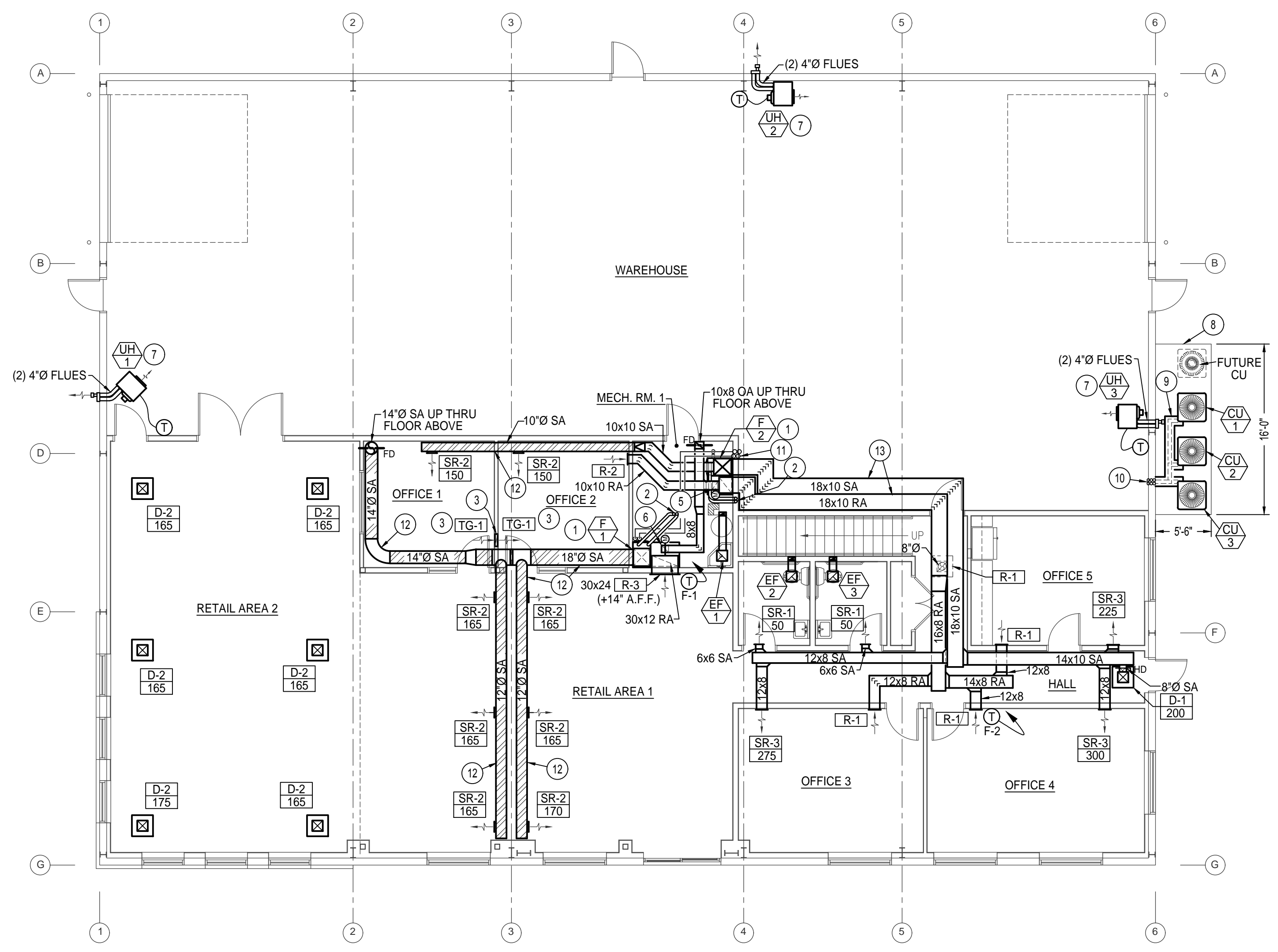
SYMBOL	DESCRIPTION
①	ELECTRONIC THERMOSTAT
FC 1	EQUIPMENT SYMBOL
	ELECTRIC WALL HEATER
	RECTANGULAR SUPPLY AND RETURN AIR DUCT TAKE-OFF
	TURNING VANES
	DUCT TRANSITION
	INSULATED FLEXIBLE DUCT
	CEILING SUPPLY DIFFUSER
	CEILING RETURN AIR GRILLE
	CEILING MOUNTED EXHAUST FAN
	GAS FURNACE
	AIR COOLED CONDENSING UNIT



TYPICAL UPFLOW FURNACE ELEVATION
NO SCALE



2ND FLOOR PLAN - MECHANICAL
SCALE: 1/8" = 1'-0"
North



1ST FLOOR PLAN - MECHANICAL
SCALE: 1/8" = 1'-0"
North

PROFESSIONAL ENGINEER REGISTERED
Donna E. Suda
STATE OF IDAHO
MAY 16, 2007
C. SUDMEYERS

Dec 07, 2020

Engineered Systems Associates
1355 EAST CENTER
POCATELLO, IDAHO 83201
PHONE: (208) 233-0501
FAX: (208) 233-0529
EMAIL: esa@engsystems.com
ESA JOB NUMBER: 20085